



LADCO | LAKE MICHIGAN
AIR DIRECTORS CONSORTIUM

Midwest Air Quality Planning Applications of Earth Science Data

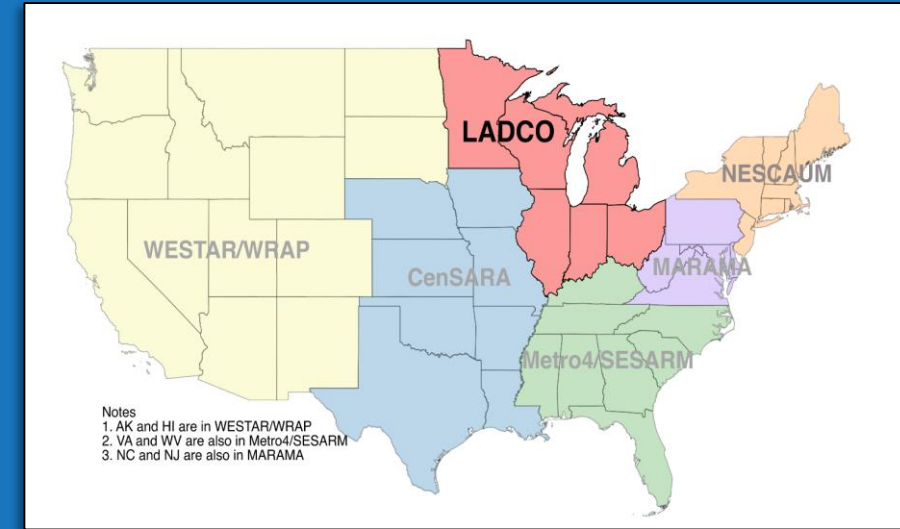
Zac Adelman

LADCO Executive Director

NASA Aerosol, Clouds, Convection and Precipitation
Air Quality Workshop
March 16-18, 2021

Current Regional Air Quality Planning Issues

- Regional Haze (light extinction from aerosols)
- Ozone
 - NAAQS attainment
 - Model improvements (lakeshore dynamics)
- Long-range smoke transport and impacts on regional/local surface air quality
- International transport (Canadian sources)
- Source-receptor relationships: which emissions to reduce and where



Multi-jurisdictional Organizations (MJOs)

(NASA) Satellite Data Products In-Use* @ LADCO

Meteorology

Surface reflectance

Soil moisture/temp (SPoRT LIS)

Cloud thickness and fraction

Temperature

Precipitation

Snow cover/depth

Air Quality and Emissions

AOD and AOT

Aerosol backscatter (CALIPSO)

NO₂, HCHO, SO₂, CO

Fire incidents and strength

Green vegetation fraction

Land cover/land use

* Or in the process of being integrated into our work

Satellite Data in Action

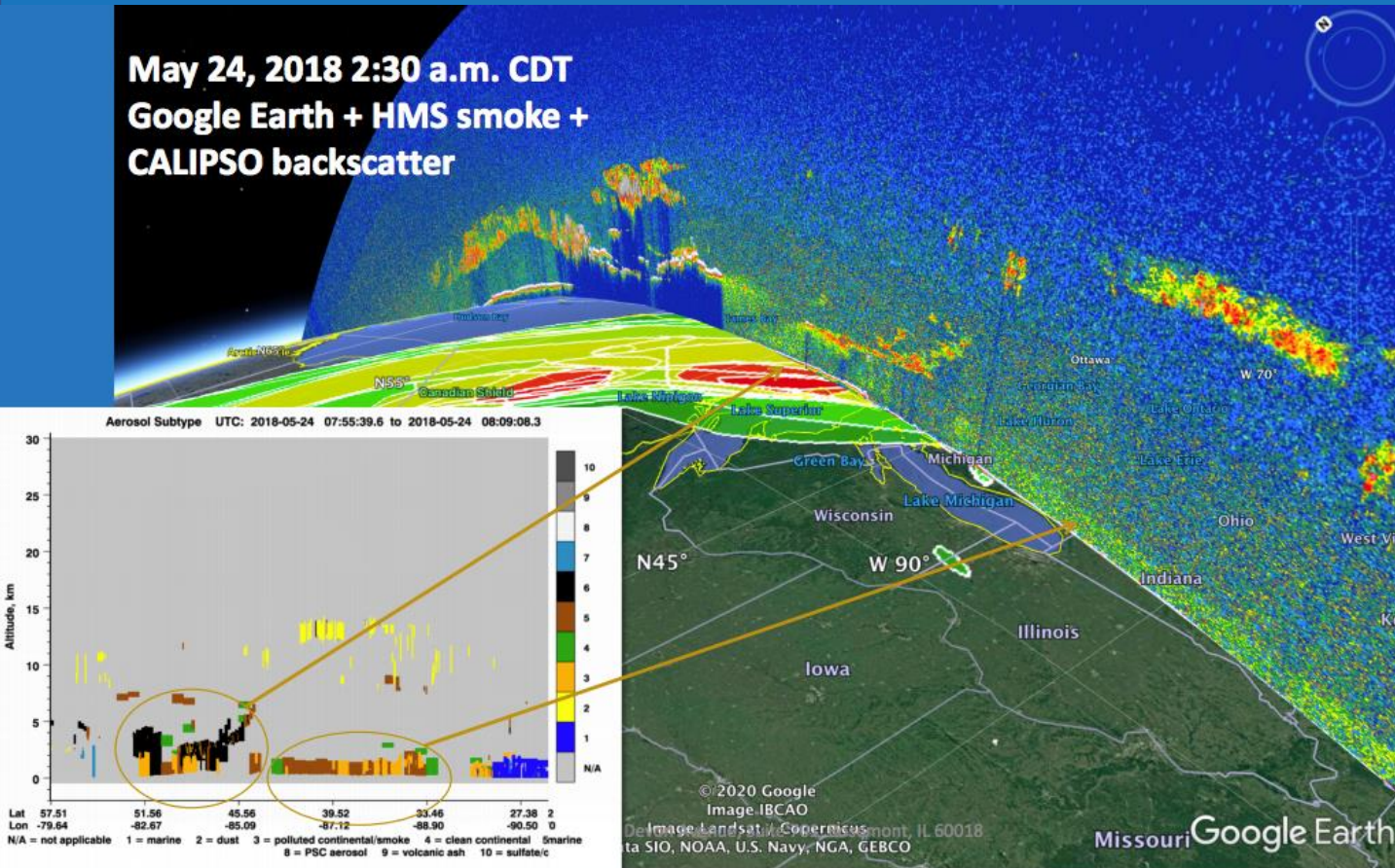
- Midwest planning satellite data applications
 - Tracking smoke from fires/exceptional events
 - Episode analysis
 - Lake breeze identification
 - Regional modeling boundary conditions
 - Surface trends analysis
 - Meteorology modeling FDDA
- What's on the horizon
 - Improving emissions inventories
 - Chemical data assimilation in regional AQMs
 - Data fusion across observational assets



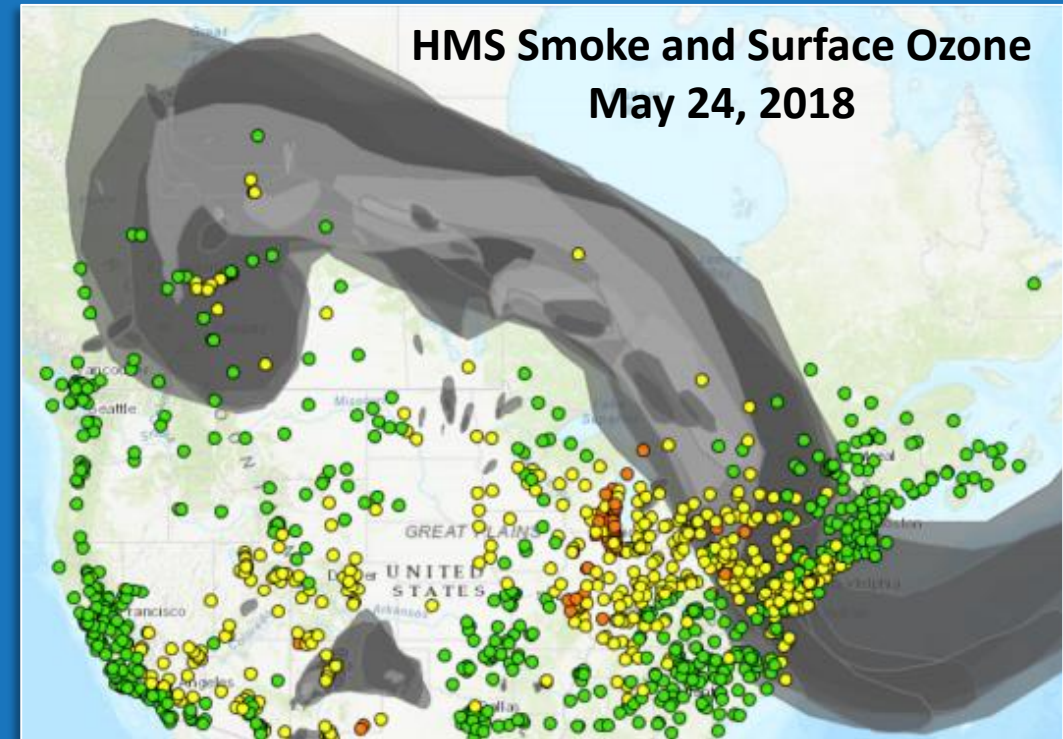
NOAA-20/VIIRS Corrected Reflectance
June 17, 2020

A Little More About Fires...

May 24, 2018 2:30 a.m. CDT
Google Earth + HMS smoke +
CALIPSO backscatter



HMS Smoke and Surface Ozone
May 24, 2018



Satellite retrievals of AOD, smoke imagery, and vertical backscatter profiles are used heavily for smoke impact assessments/exceptional events

Satellite Data Are Being Used for Air Quality Planning...

... yet there is still work to be done to expand the use of these data

2018 Edition

Applied Science for DUMMIES

Leverage past experience to educate researchers in emerging applied science programs on communicating with planners, understanding planning agency needs, and building sustained collaborations

- **Create saliency.** How to integrate remote sensing in the mission of the environmental management/health agency?
- **Create legitimacy.** How to solidify the use of these assets/analysis techniques in the planning process such that they become integral to future forms to the Clean Air Act?
- **Create demand.** How to create extensible, reproducible, planning-agency friendly processes for using remote sensing data?
- **Understand the paradigm.** Commit to and invest in the concept that applied science is a process as much as it a product.